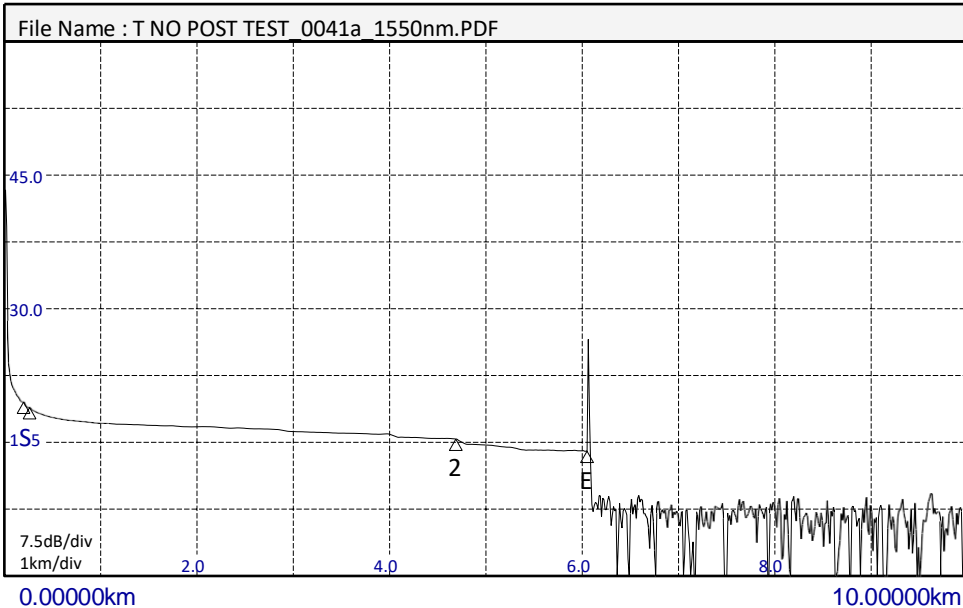
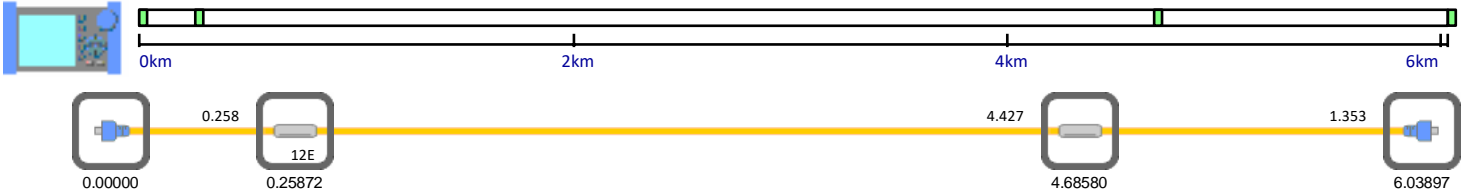
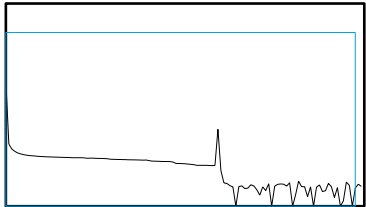


# Link Report

Job Information	
Label: PGCL	Location(A): TRASCO 220 KV
Company Name: SKYLINK MULTIMEDIA	Location(B): ASL
Name: ASL TO TRASCO 220 KV	Current Data Flag: BC
Fiber ID: 4F	Supplier Name: Yokogawa Test & Measurement
Fiber Type: Conventional SMF	Model Name: AQ1000 C3YG08010F
Cable ID:	Unit Name:
Cable Code:	FW Ver.: 1.04
Reporting Date: 16/10/2025 18:54	



Measure Conditions	
Wavelength:	1550 nm
Distance Range:	10 km
Pulse Width:	200 ns
Attenuation:	Auto
Sample Interval:	2 m
Average Duration:	30 sec
IOR:	1.46000



Event Search Condition	
Splice Loss:	0.10 dB
Return Loss:	70 dB
End of Fiber:	10 dB
Splitter Loss:	----
Backscatter Level:	-50.00 dB
Macro Bending:	----

Event No	Distance (km)	Section (km)	Splice Loss(dB)	Return Loss(dB)	Cumulate Loss(dB)	dB/km	Event Type	Section IOR
1	0.25872		0.388		0.664	9.805	┌───┐	1.46000
2	4.68580	4.42708	0.516		2.151	0.542	┌───┐	1.46000
E	6.03897	1.35317		31.911	3.617	0.703	└───┘	1.46000