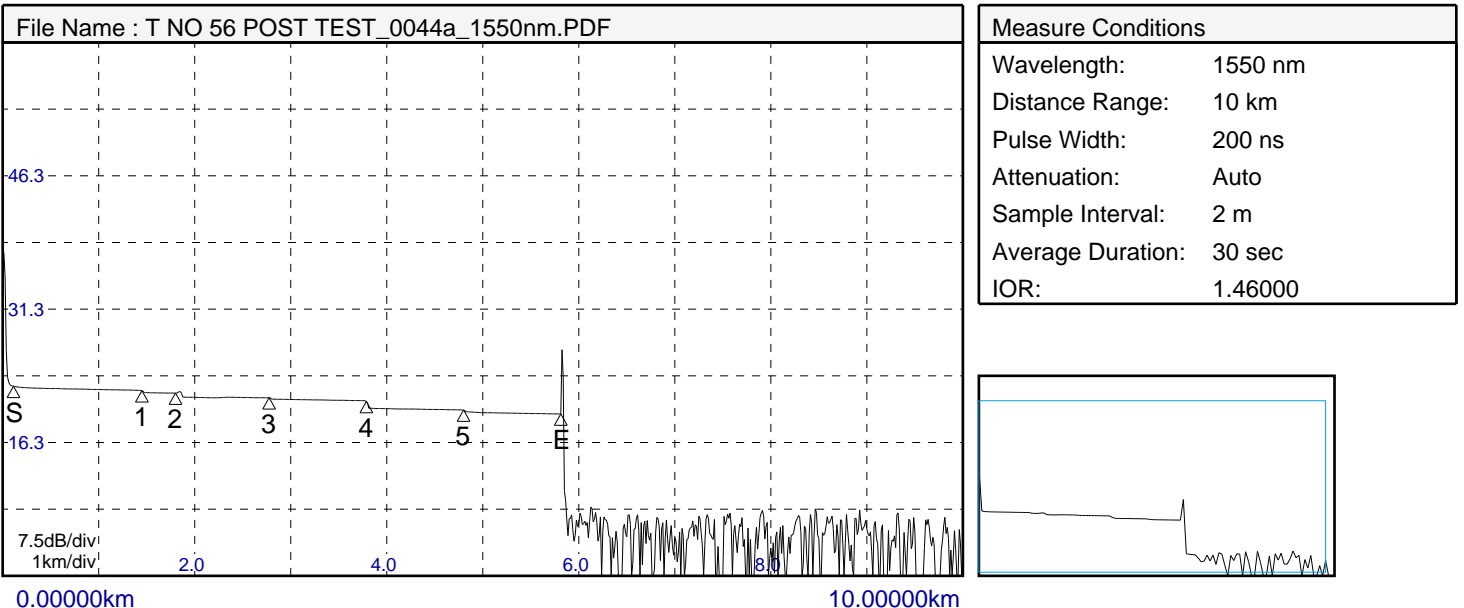
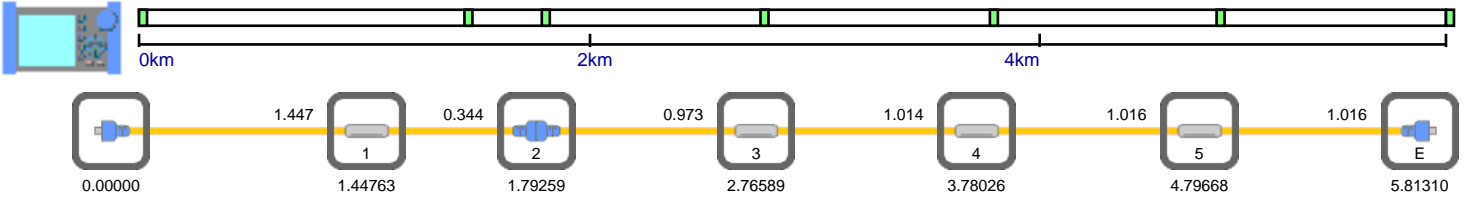
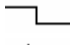
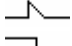
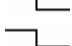
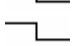
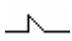



# Link Report

Job Information	
Label: PGCL	Location(A): DGMSS
Company Name: SKYLINK MULTIMEDIA	Location(B): TRANSCO 220 KV
Name: TRANSCO 220 KV TO DGMSS	Current Data Flag: BC
Fiber ID: 4F	Supplier Name: Yokogawa Test & Measurement
Fiber Type: Conventional SMF	Model Name: AQ1000 C3YG08010F
Cable ID:	Unit Name:
Cable Code:	FW Ver.: 1.04
Reporting Date: 23/10/2025 20:21	



Event Search Condition	
Splice Loss:	0.10 dB
Return Loss:	70 dB
End of Fiber:	10 dB
Splitter Loss:	----
Backscatter Level:	-52.00 dB
Macro Bending:	----

Event No	Distance (km)	Section (km)	Splice Loss(dB)	Return Loss(dB)	Cumulate Loss(dB)	dB/km	Event Type	Section IOR
1	1.44763		0.231		0.350	0.262		1.46000
2	1.79259	0.34496	0.473	70.085	0.646	0.187		1.46000
3	2.76589	0.97330	0.158		1.153	0.036		1.46000
4	3.78026	1.01437	0.849		1.499	0.185		1.46000
5	4.79668	1.01642	0.243		2.535	0.185		1.46000
E	5.81310	1.01642		44.702	3.001	0.219		1.46000